

Palma
AT ROLLING HILLS RANCH



CORNERSTONE
COMMUNITIES

www.cornerstonecommunities.com

Our Commitment

Cornerstone Communities Corporation is committed to making the American dream a reality by providing exceptional homes and neighborhoods for today's families. Cornerstone prides itself on creating homes that emphasize innovative design, efficiency & privacy in well-maintained, conveniently located neighborhoods.

Cornerstone's commitment to designing quality homes full of amenities that meet the wants & needs of today's discerning buyers is based on their experience of building more than 9,000 homes in Northern & Southern California. Now Cornerstone proudly presents our newest premier community, Palma at Rolling Hills Ranch.

This upscale community of 54 homes showcases rich exteriors influenced by Spanish, Tuscan & Santa Barbara architecture. Palma features homes ranging from 2,555 to 3,915 square feet. Three remarkable floor plans with three & four-car garages are offered along with numerous room options including: up to seven bedrooms, master bedroom balconies, studies, bonus rooms, lofts & casita. With these & dozens of other available options, Palma provides you the opportunity to create a home that suits your personal lifestyle & preferences.



CORNERSTONE
C O M M U N I T I E S

Features

Distinctive Exteriors

- Spanish, Tuscan and Santa Barbara themed architectural exteriors
- Designer-selected exterior color schemes
- Concrete S-tile roof
- Insulated sectional garage doors with openers & optional windows
- Three and four-space garages with textured drywall finish
- Rear and side yard fencing
- Gas stub for BBQ and waterproof electrical outlet in patio area
- Post-tensioned foundation system
- ThermaTru 8' fiberglass entry door with oil-rubbed bronze handle set

Attractive Interiors

- Bullnose corners throughout
- Handset ceramic tile at entry, kitchen & bathrooms
- Moen® polished chrome faucets throughout
- Carrara smooth interior doors
- Two-tone paint throughout
- Family room with wood-burning fireplace and media niche
- Precast concrete fireplace surround
- Stained handrail with paint-grade balusters
- Decora white rocker-style light switches
- Contemporary recessed lighting
- Designer-selected lighting fixtures
- Spacious interior laundry area with cabinets and optional sink
- Abundant storage areas throughout
- Pre-wired for security system
- OnQ structured wiring system with Cat-5e wiring for phone & data in all bedrooms, kitchens & bonus rooms. RG-6 wiring for television in all bedrooms, family room & bonus rooms.

Elegant Master Suites

- Spacious walk-in closets
- Frameless beech cabinetry in choice of six stain colors
- Ceramic tile countertops with vitreous china sinks
- Oval soaking tub with handset ceramic tile surround
- Separate shower with handset ceramic tile and glass enclosure
- Compartmentalized water closet

Gourmet Kitchens

- Granite slab countertops in choice of four colors
- Stainless steel double-bowl sink
- Frameless beech cabinetry in choice of six stain colors
- Spacious pantries for extra storage
- Gourmet kitchen island with optional veggie sink
- Whirlpool stainless steel appliances:
 - 30" AccuBake® self-cleaning oven
 - 36" gas cooktop with 5 sealed burners
 - 1.5 cu.ft. microwave
 - Energy Star® 4-cycle, large capacity dishwasher

Energy-Efficient Features

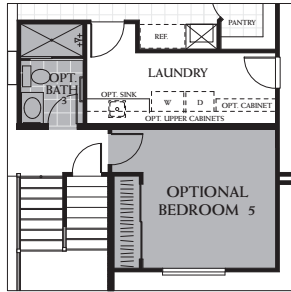
- Dual-glazed Low-E white or tan vinyl windows throughout
- Fully insulated exterior walls & ceiling at living areas
- Gas forced-air heating with setback thermostat
- 75-gallon high-efficiency water heater
- Heat-saving glass fireplace doors
- Water-saving plumbing fixtures throughout
- Insulated circulating water system for "minimal wait" hot water
- TechShield radiant barrier roof sheathing
- Optional solar panels

Design Center

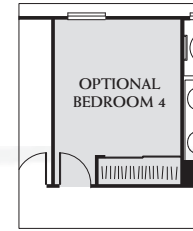
We are pleased to offer a wide variety of options and upgrades through our Design Center, where our design team is available to help you customize your home with:

- A vast array of flooring and countertop choices
- Distinctive window coverings
- Custom cabinetry
- Advanced network wiring
- Expanded security systems
- Appliance upgrades & much more ...

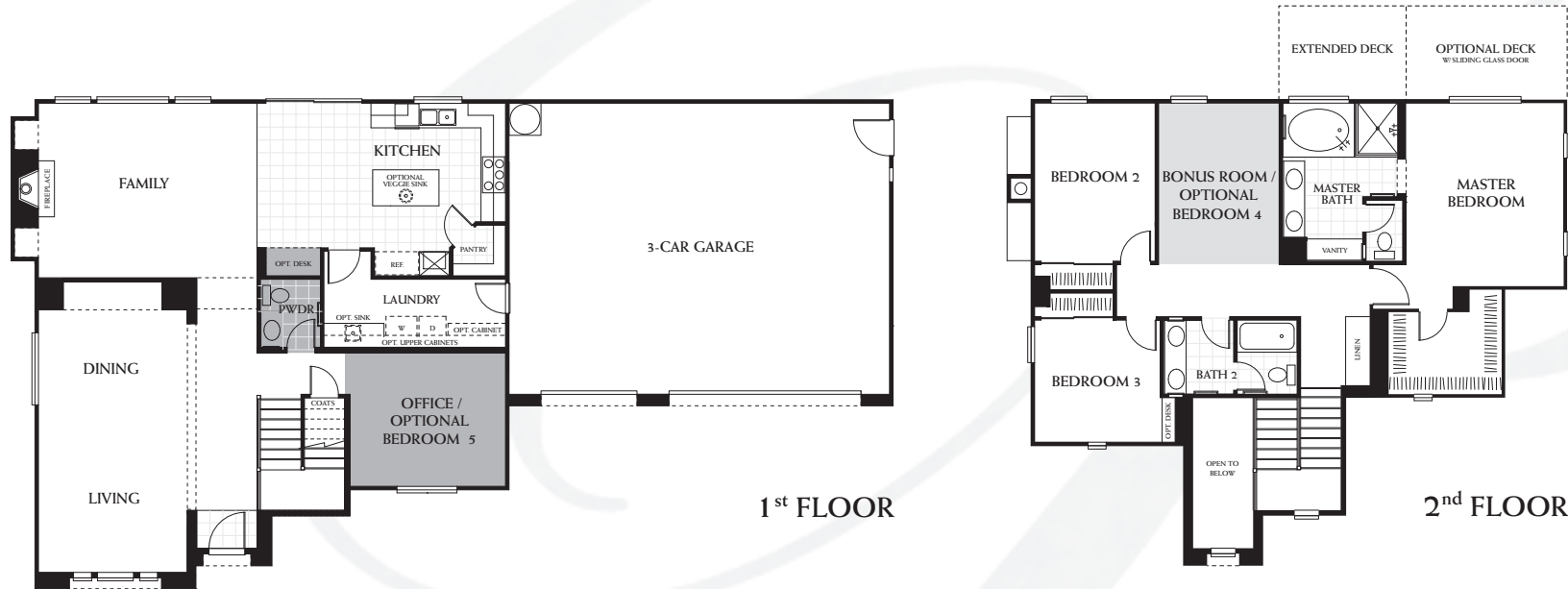
* Notice: Seller reserves the right to make alteration to plans, specifications, features, parking, fencing, plotting, options and/or prices. Decorated models are for your viewing pleasure. Optional upgrades and decorator items, such as furniture, custom wall treatments, flooring upgrades, built-ins, various hard and soft landscaping are not included in the price of the home. Windows change per elevation. Please see sales representative for further clarification.



OPTIONAL BEDROOM 5
W / BATH 3



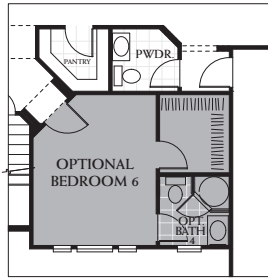
OPTIONAL BEDROOM 4



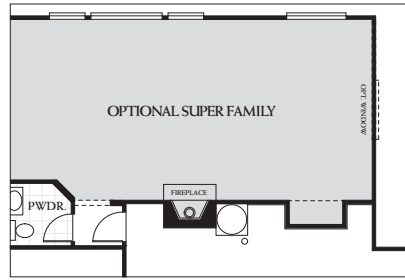
1st FLOOR

2nd FLOOR

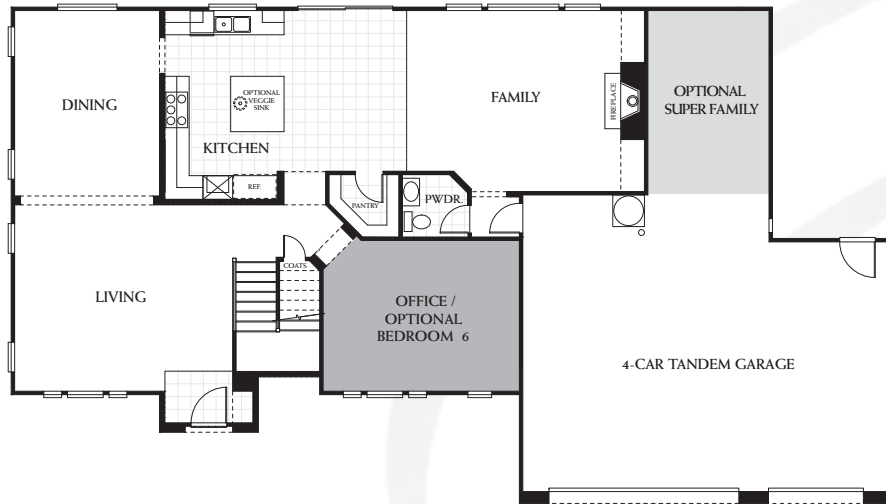
Residence *One*
2,555 Sq. Ft.
Up to 5 Bedrooms, 3 Baths



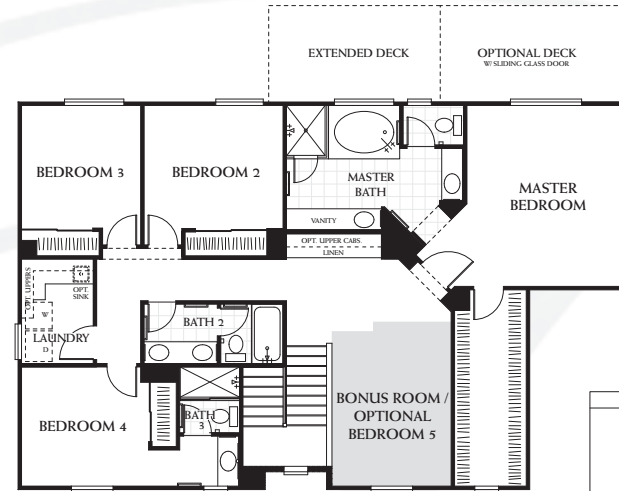
OPTIONAL BEDROOM 6
W / BATH 4



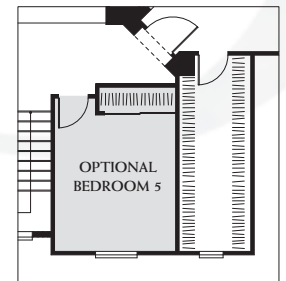
OPTIONAL SUPER FAMILY



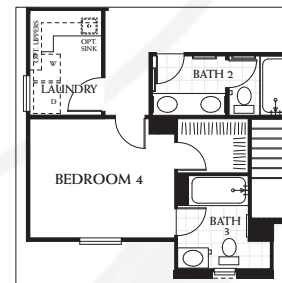
1st FLOOR



2nd FLOOR



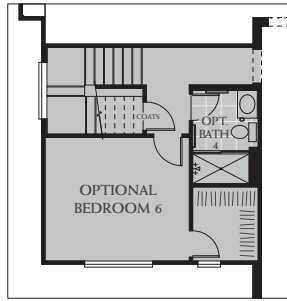
OPTIONAL BEDROOM 5



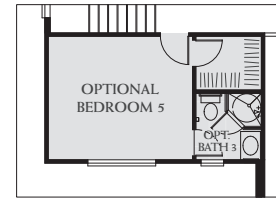
BEDROOM 4
AT 2A & 2C ELEVATION

Residence *Two*

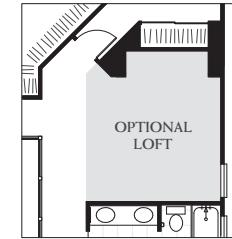
3,080 Sq. Ft.
Up to 6 Bedrooms, 4 1/2 Baths



OPTIONAL BEDROOM 6
W/ BATH 4



OPTIONAL BEDROOM 5
W/ BATH 3



OPTIONAL LOFT



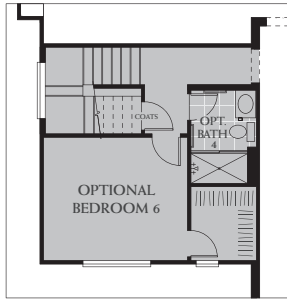
1st FLOOR



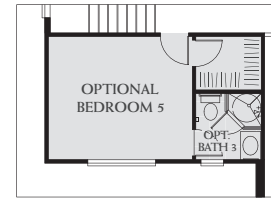
2nd FLOOR

Residence *Three*

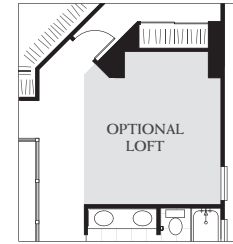
3,285 Sq. Ft.
Up to 6 Bedrooms, 4 Baths



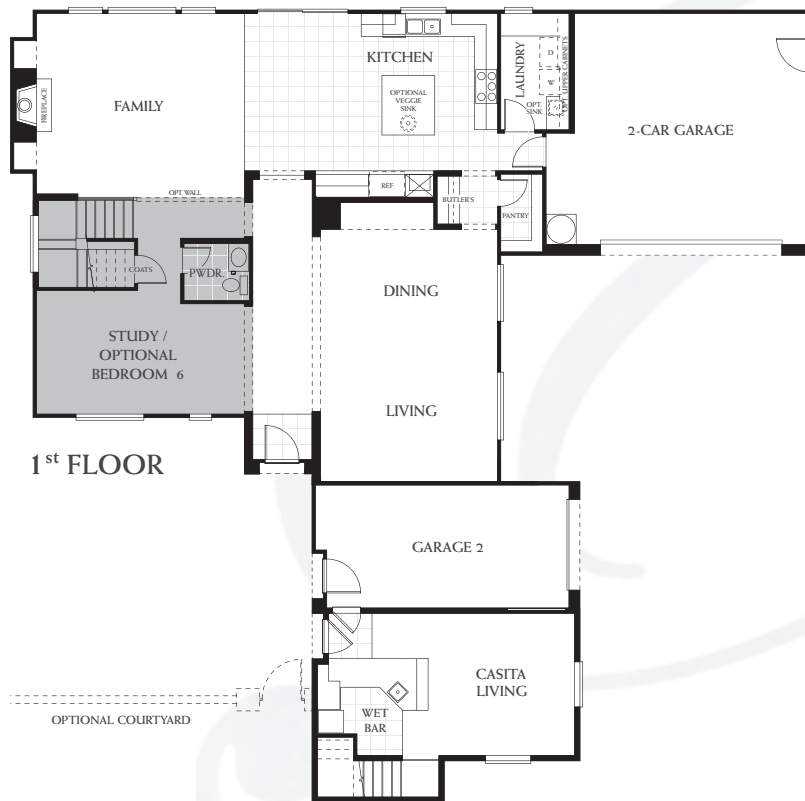
OPTIONAL BEDROOM 6
W/ BATH 4



OPTIONAL BEDROOM 5
W/ BATH 3



OPTIONAL LOFT



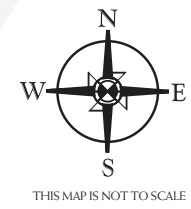
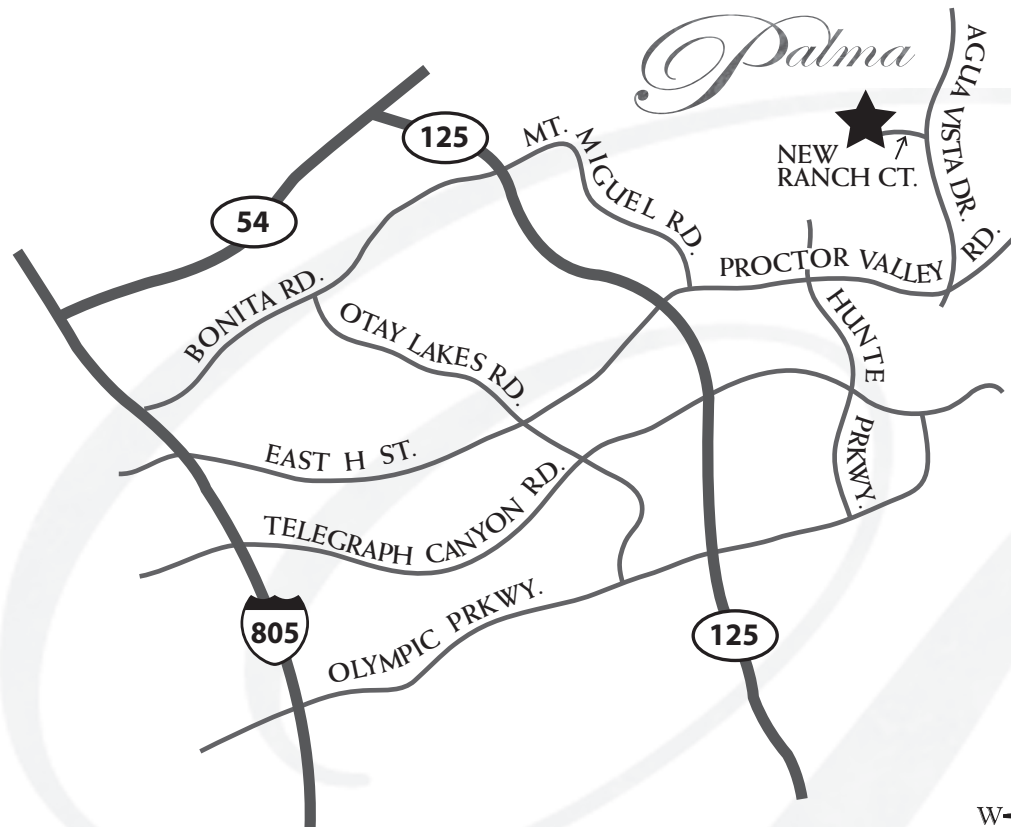
1st FLOOR



2nd FLOOR

Residence *Three* with Casita

3,915 Sq. Ft.
Up to 7 Bedrooms, 5 Baths



3014 New Ranch Court, Chula Vista, CA 91914
p619-397-4303 f619-397-4323
www.cornerstonecommunities.com



EQUAL HOUSING
OPPORTUNITY