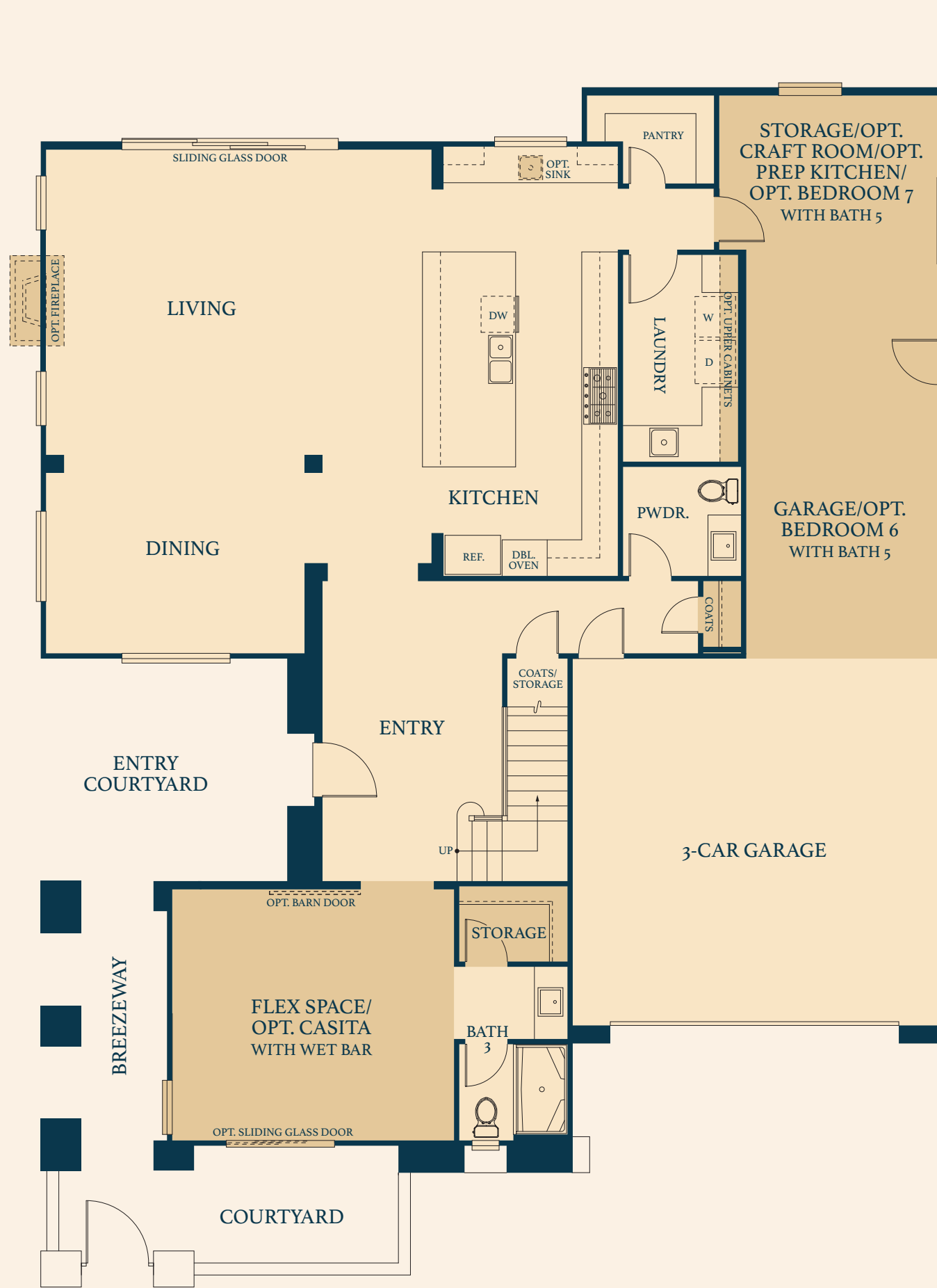
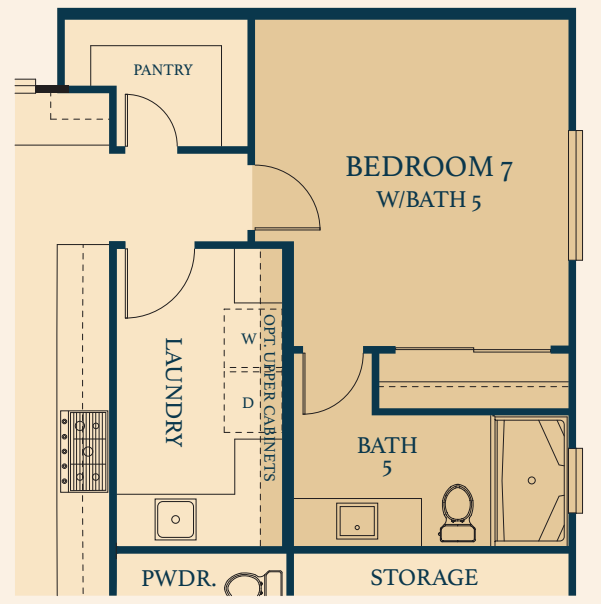


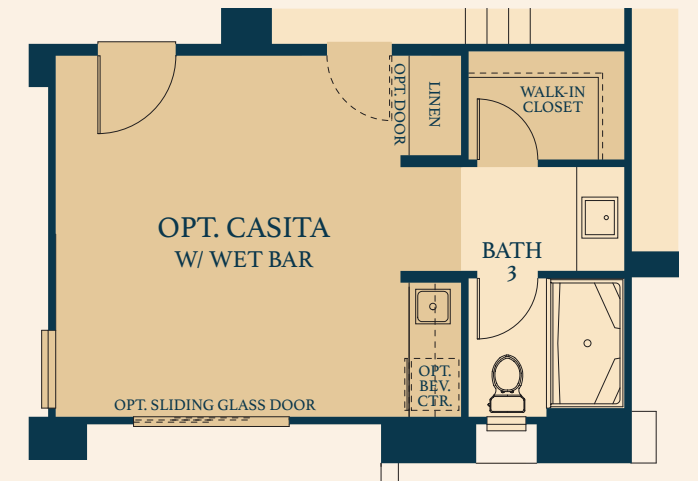
# RESIDENCE 2



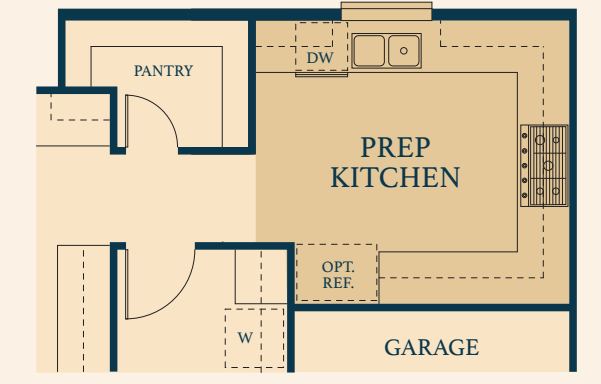
FIRST FLOOR  
OPTIONAL OUTDOOR  
LIVING WITH FIREPLACE



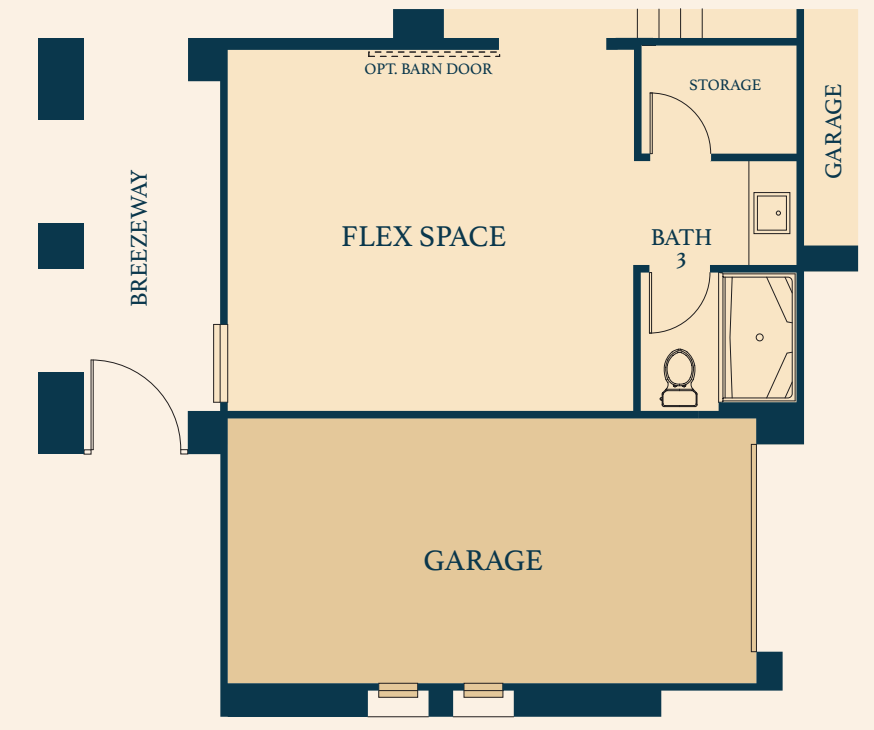
FIRST FLOOR  
OPTIONAL BEDROOM 7 WITH BATH 5



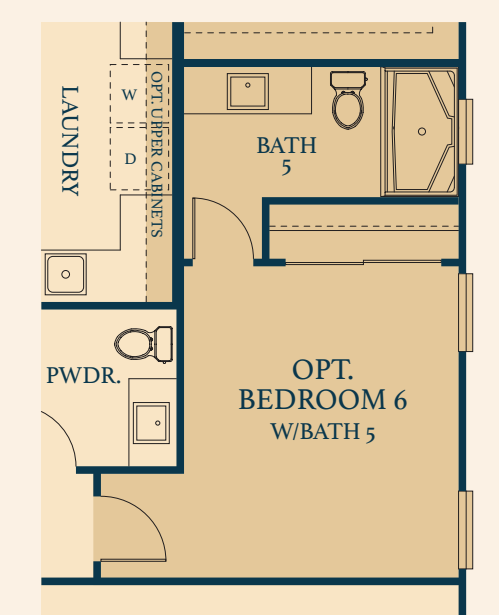
FIRST FLOOR  
OPTIONAL CASITA WITH FULL WET BAR



FIRST FLOOR  
OPTIONAL PREP KITCHEN



RESIDENCE 2X FEATURES AN ADDITIONAL  
GARAGE IN LIEU OF COURTYARD



FIRST FLOOR  
OPTIONAL BEDROOM 6 WITH BATH 5

- From 3,597 to 3,848 sq.ft. • Up to 6 Bedrooms • Up to 5.5 Bathrooms
- Generous Master Suite with Dual Walk-in Closets • Up to 4-car Garage
- Multiple Room Configurations

## ROOM OPTIONS

Notice: Seller reserves the right to make alteration to plans, specifications, features, parking, fencing, plotting, options and/or prices. Decorated models are for your viewing pleasure. Optional upgrades and decorator items, such as furniture, custom wall treatments, flooring upgrades, built-ins, various hard and soft landscaping are not included in the price of the home. Windows change per elevations. Please see sales representative for further clarification. Models or photos do not reflect racial preference.

