



Summit Estates

La Mesa



Our Commitment

Cornerstone Communities is committed to making the American Dream a reality by providing exceptional homes and neighborhoods to today's families. We take pride in constructing homes that emphasize innovative design, modern finishes, energy efficiency, and privacy in well-maintained and conveniently located neighborhoods. We design quality homes full of amenities that meet the wants and needs of discerning buyers. We give our owners over 28 years of experience building more than 9,000 homes in over 90 developments throughout California.

About Summit Estates

Summit Estates is located in beautiful La Mesa, California. This exclusive new home community by Cornerstone Communities, is gated and features 30 luxury single-story and two-story estate homes, each with their own large private, fenced backyard.

These homes are designed for generations to live under the same roof, while maintaining privacy. Every home features a first-floor Multi Gen Suite complete with its own entrance and the option to include a Kitchenette upgrade. Summit Estates is perfect for the family who wants to lower child care and senior care costs. This is a cost effective solution that emphasizes family and togetherness.

The three modern floorplans offer stylish interiors and upscale designer finishes. Choose a home to best fit your family with up to 6 bedrooms and 5.5 bathrooms. Enjoy open-style plans ranging from 2,473 to 3,901 square feet of living and loaded with upgrades. Chef's kitchen's with modern stainless-steel appliances and large islands overlook the great room with a fireplace. Sliding glass doors bring in the light and lead to the backyard. Each home will include homeowner owned solar panels to provide long term savings and a 2- or 3-car garage.

Best of all, many of these homes offer an amazing premium view sitting on a crest. Privacy, space for the entire family, innovation and luxury; all make Summit Estates a dream home.



Summit Estates

- RESIDENCE 1
- RESIDENCE 2
- RESIDENCE 3



Phase	Lot Numbers
One	1 - 6
Two	7 - 9, 27 - 30
Three	10 - 13, 25 - 26
Four	14 - 15, 21 - 24
Five	16 - 20



Features

Attractive Interiors

- Maple Shaker cabinetry with concealed hinges and crown moulding
- Stylish two-panel 8-foot interior doors
- Polished chrome lever handle sets
- Contemporary recessed LED lighting
- Interior laundry with utility sink
- White rocker-style switches
- Standard 9-foot ceilings / 10' in Plan 1

Wired Living

- High-speed fiber-optic cable
- Flat-screen TV pre-wire in living room and primary bedroom
- Cat-6 & RG6 Coax cable outlet in living room and all bedrooms

Gourmet Kitchens

- Quartz slab countertop with double compartment stainless sink
- Sleek faucet in chrome
- Stainless-steel appliances
- Gas Smart LG 36" Cooktop
- Smart Microwave Speed Oven Combo
- 10-cycle smart dishwasher with quad wash & dynamic dry feature. Energy star qualified / 46dBA / triple filtration wash system / fingerprint resistant

Primary Suite Elegance

- Spacious walk-in closets
- Optional primary suite balcony
- Separate Shower & Tub
- Silestone quartz countertops with dual Kohler undermount sinks
- Durable Moen Genta LX chrome finish plumbing fixtures

Energy-Efficient Features

- Homeowner owned solar panels
- Pre plumbed for car charger
- Energy saving LED lighting
- Fully insulated
- Forced-air heating & air conditioning with programmable Honeywell WIFI thermostat & zone temperature control
- Noritz gas tankless water heater with WIFI capabilities
- Water-saving plumbing fixtures

Distinctive Exteriors

- Spanish, Mediterranean, Craftsman & California Coastal themed architecture
- Designer-selected exterior colors
- Post-tension foundation system
- Attached, up to 3-bay garages
- 8-foot insulated roll-up garage door
- Legacy 920 garage door opener with two transmitters & WIFI capabilities
- Fiberglass entry glass doors

Private Outdoor Space

- Amazing View Lots
- Spacious yard with low maintenance fencing
- Multi Gen suite private courtyard
- Backyard gas line

Amenities

- Gated Community with private entrance
- Park with scenic view & reflection zone seating

Community Conveniences

- Easy access to 94 and 125 freeways
- Nearby hiking

Design Center

We are pleased to offer a wide variety of options and upgrades through our Design Center. Our design team will help you customize your home with:

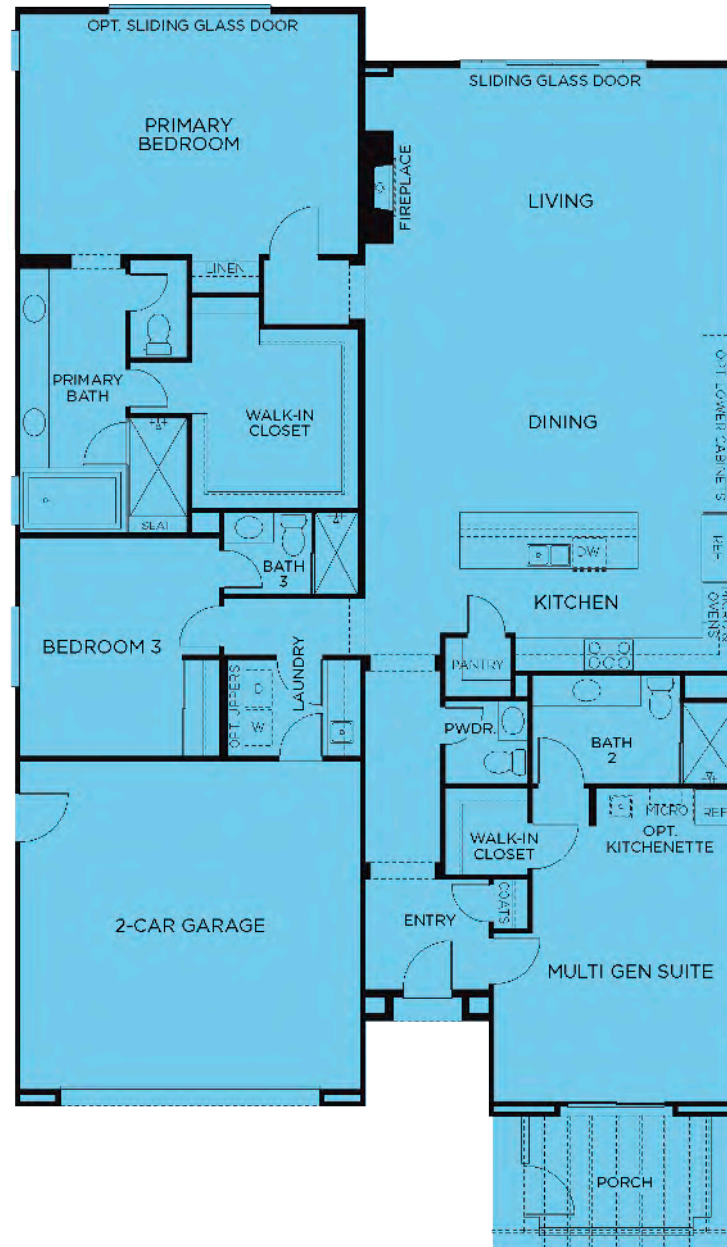
- A vast array of flooring & countertops
- Distinctive window coverings
- Numerous cabinetry selections
- Appliance upgrades
- Lighting options
- Mirrored wardrobe doors
- Tub / shower enclosures
- Garage floor coating
- And much more...



- Single-Story, 2-Car Garage
- 2,473 Square Feet
- 3 Beds & 3.5 Baths
- Multi Gen Suite
- Homeowner Owned Solar
- Private Fenced Yard



Residence 1



All images are artistic renderings of Summit Estates They are conceptual drawings based on current development plans, which are subject to change without notice. All artwork represented here is the sole property of Cornerstone Communities. Any reproduction or any other use without the written permission of Cornerstone Communities, LLC is strictly prohibited. Prices, plans, dimensions, features, specifications, materials and availability of homes or communities are subject to change without notice or obligation. The Cove Realty Group CA DRE #01451200

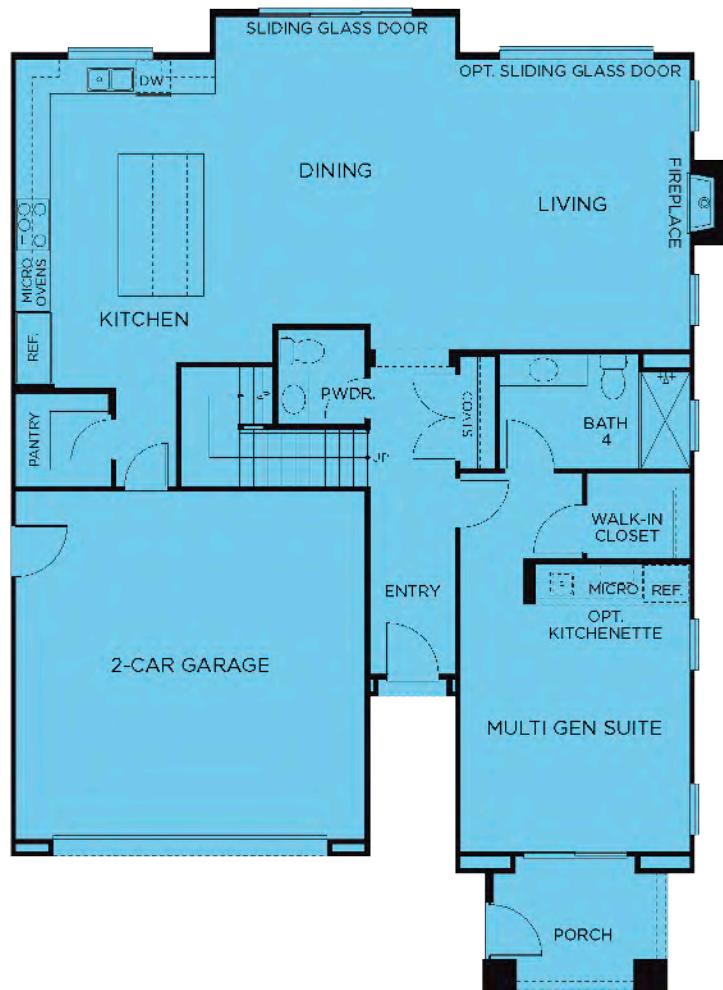




- Two-Story, 2-Car Garage
- 3,091 to 3,105 Square Feet
- 5 Beds & 4.5 Baths
- Multi Gen Suite
- Homeowner Owned Solar
- Private Fenced Yard



Residence 2



First Floor



Second Floor

All images are artistic renderings of Summit Estates They are conceptual drawings based on current development plans, which are subject to change without notice. All artwork represented here is the sole property of Cornerstone Communities. Any reproduction or any other use without the written permission of Cornerstone Communities, LLC is strictly prohibited. Prices, plans, dimensions, features, specifications, materials and availability of homes or communities are subject to change without notice or obligation. The Cove Realty Group CA DRE #01451200

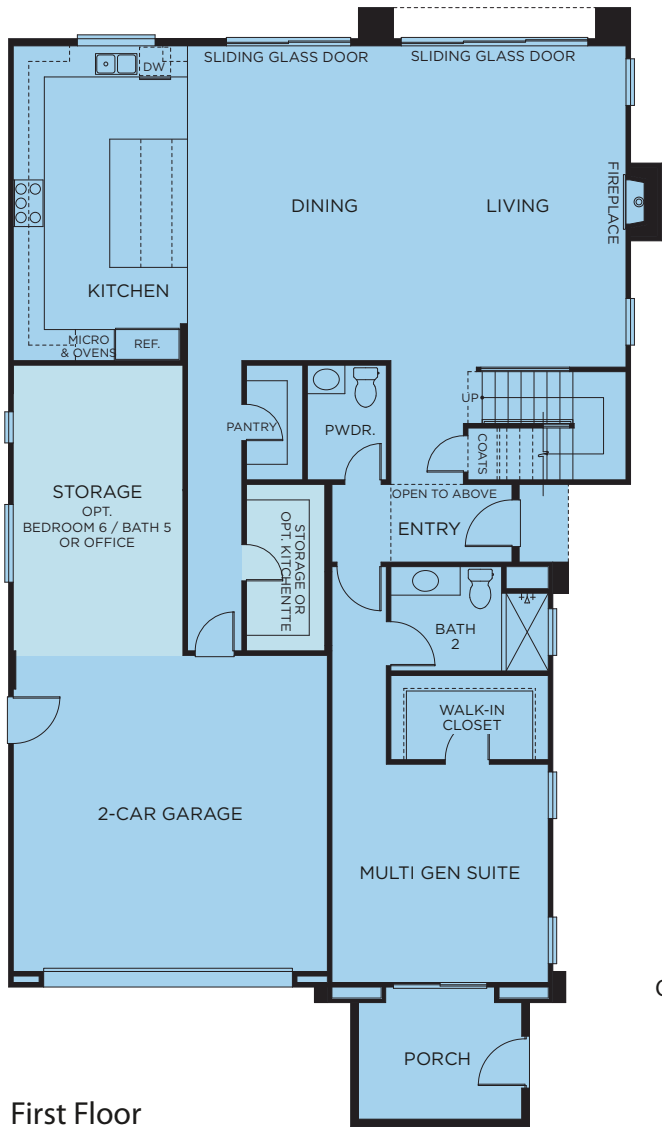




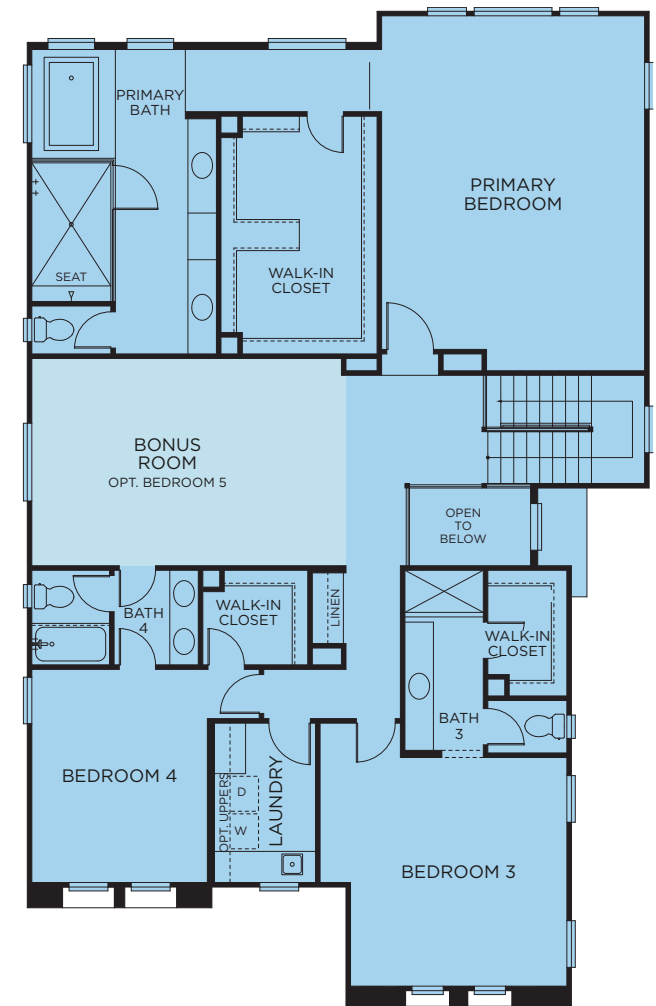
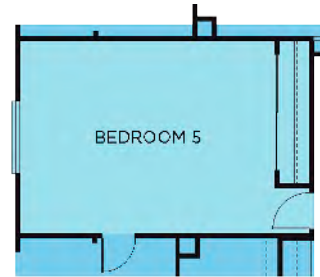
- Two-Story, 2- or 3-Car Garage
- 3,677 to 3,901 Square Feet
- Up to 6 Beds & 5.5 Baths
- Multi Gen Suite
- Homeowner Owned Solar
- Private Fenced Yard



Residence 3



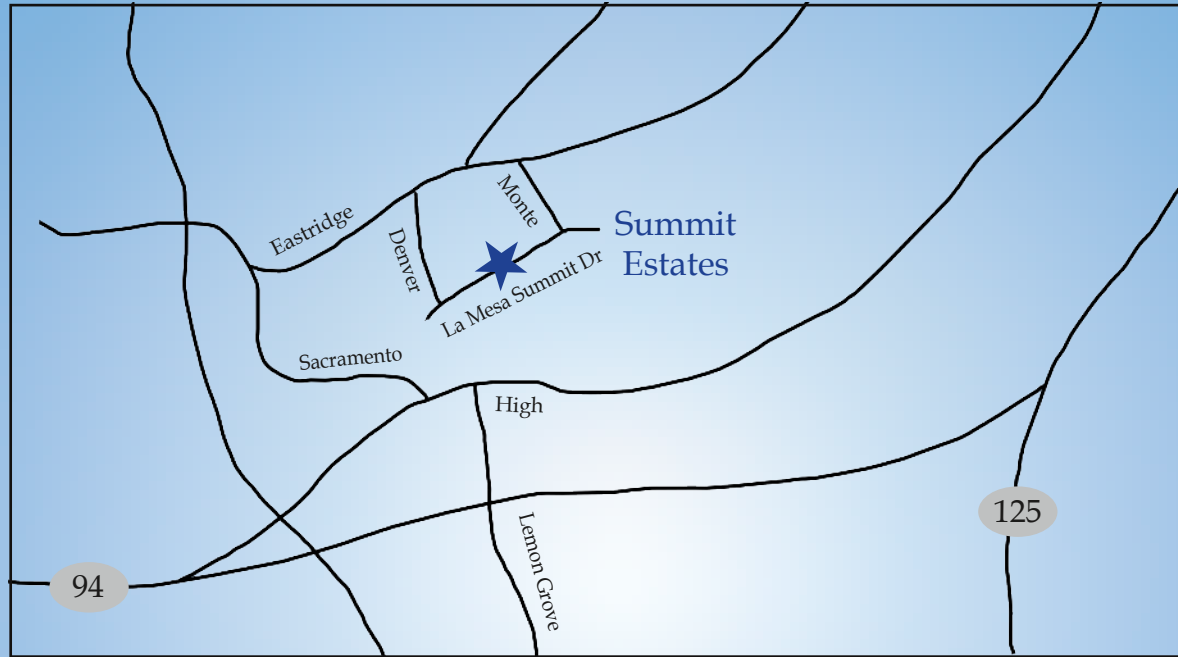
First Floor



Second Floor

All images are artistic renderings of Summit Estates They are conceptual drawings based on current development plans, which are subject to change without notice. All artwork represented here is the sole property of Cornerstone Communities. Any reproduction or any other use without the written permission of Cornerstone Communities, LLC is strictly prohibited. Prices, plans, dimensions, features, specifications, materials and availability of homes or communities are subject to change without notice or obligation. The Cove Realty Group CA DRE #01451200





Summit Estates

7705 La Mesa Summit Drive, La Mesa, CA 91941 | 619.363.9513

CornerstoneCommunities.com/SummitEstates

The Cove Realty Group CA DRE #01451200

